



**CAMPAIGN
FOR
REAL ALE**

Ale Talk

The Real Ale Magazine of Huddersfield CAMRA



**The George Inn, Upper Denby.
Huddersfield CAMRA's Rural Pub of the Year 2016**

Contents

Out and About	page 3	Pressing Issues	Page 19
Winter Pub of the Season	page 13	LocAle Brewing	Page 21
Rural Pub of the Year 2016	page 15	Local & Regional Beer Festivals	Page 29
Double Awards for Sportsman	page 17	Branch Diary	Page 30



SUMMER 2016

The Huddersfield Campaign for Real Ale CAMRA Magazine
Distributed FREE to over 200 Pubs and Clubs.
Circulation 2000.

Please read and leave for others to enjoy.



THE COMMERCIAL

Slaithwaite's Premier Free House

Serving 8 Handpulled Real Ales



CommerciAle and a Mild
From Empire Brewing
Plus 6 Rotating Guest beers
From local and regional
microbreweries



And Real Cider & Perry

Ales from £2 a pint Tea & Coffee

Pie & Peas available Fri & Sat

Walkers & Bikers welcome Dog friendly

Function Room Available

SKY SPORTS ON 2 SCREENS

We're on the TransPennine Real Ale Trail



CAMRA Good Beer Guide

2011 to 2016

Huddersfield CAMRA

SPRING Pub of the Season 2012



Website: www.commercial-slaithwaite.co.uk

Facebook: the commercial slawit

Email: the-commercial09@hotmail.co.uk

1 Carr Lane, Slaithwaite, Huddersfield, HD7 5AN Tel: 01484 846258

3 minutes walk from Slaithwaite Railway Station and local Bus

Routes 181, 335, 339, 907 and 938

Out and About Huddersfield

Check out <http://whatpub.com> for pubs selling Real Ale in the Huddersfield licensing area. If you notice anything new please contact the Branch via the website <http://huddscamra.org.uk>

There is a new manager at the **Rat & Ratchet**. “Chalky” White, who was temporarily running the pub after Richard Prest left, has been promoted to the local manager responsible for the Ossett pubs in the area. The new landlord at the Rat is David Kelly, who works there and accepted the Huddersfield Cider Pub of the Year 2015 and Regional Cider awards last year.

The Grove celebrates its 10th anniversary this June. This award winning pub has featured 9 consecutive years in CAMRA’s Good beer Guide and won numerous awards for its beers. It has an amazing, and probably the largest, range of hand-pulled cask, craft tap and bottled beers of anywhere in Huddersfield. From the very start, Ian and Taya have worked hard to achieve their perfect pub where anyone would be proud to drink and call their local.

The **Star Inn** will be holding its annual Summer beer festival outside in the marquee starting **Wednesday 6th July** and running through to the **Sunday 10th**. Expect to see another great range of new microbrewery beers on offer, all served on handpull.

Congratulations go to **The Sportsman** which has been voted Huddersfield CAMRA’s **Pub of the Year 2016** and the Branch’s Cider **Pub of the Year 2016**. Well done John and his staff. See feature article. It recently held a mini beer festival showcasing an excellent range of IPA’s. This was followed by Meet the Brewer evenings starring the award-winning Tiny Rebel and Hardknott breweries. Check the notice board for forthcoming events.

The **Kings Head** has been voted Mild Pub of the Year and a presentation will be made in due course. In the meantime, work progresses on the building. The new bar is nearly finished and awaiting a lick of paint while the side room is rumoured to be opening sometime this Summer.

Both the **Grove** and the **Sportsman** are reported to have replaced Magic Rock beers on the bar due to recent price hikes by the brewery, claimed to be in double figures. The **Kings Head** is the only Town centre pub still stocking Ringmaster but at the new higher price. Magic Rock beers are available at the Magic Rock Tap out of town.

The **Head of Steam** has introduced a **CAMRA Discount Scheme** which offers a **20p discount** on each pint of real ale on production of a valid CAMRA membership card. This applies all day and every day. Also, a **Summer of Cider** has been introduced whereby if you buy 7 pints of real cider, you get your 8th pint free. The range of ciders is determined by each manager, so please ask if there is something you’d like to see on the bar. The scheme involves a collectors’ card and runs between the 1st June and the 31st August.

The **Plumbers Arms** has now opened. On the opening night there were 8 handpulls serving a range of beers. These included Timothy Taylors Landlord, Elland 1872 Porter, Felix Brewing Co. Boothtown Golden, Tetley Bitter, Cheshire Gap, Bradfield’s Farmers Blonde and Mallinsons Citra with Slack Alice Cider. The décor is light and airy with plenty of exposed brickwork and alcoves. There are high seats and tables centrally with lower, plusher seating towards the outside. In front of the pub, there are pavement style drinking areas and a beer garden to the rear. The pub’s location makes it handy for the bus station. A wine & gin bar is due to open next door in summer.

The **Olde Hatte** has had a refurbishment and is reported to have two handpulls serving real ale. Recently, the beers have included Sharpe’s Atlantic, Doombar and Timothy Taylor’s Landlord.

The **Picture House**, formerly the **Varsity**, has re-opened as the **Roxy** with table tennis and pool tables but alas, no real ale! The nearby **County** is up for lease.

There is a new addition to the Town’s real ale pubs, **Small Seeds**. This was formerly the late night live music venue **Bar 1:22** on New Street, Castlegate. **Small Seeds** is co-owned by Megan and Stevo who have the **Bar Maroc** above. In contrast to the Bar Maroc, the pub has a rustic woodland appearance with a timber clad bar and stage. It is a real ale pub serving the same beers as the Bar Maroc – they share the same cellar! On a recent visit there was Small World Brewery Secret and Thunderbridge Stout, Three Fiends Two Face and Great Heck Proverbs 31:7. There is an Acoustic Night on Tuesday.

Arcade Beers

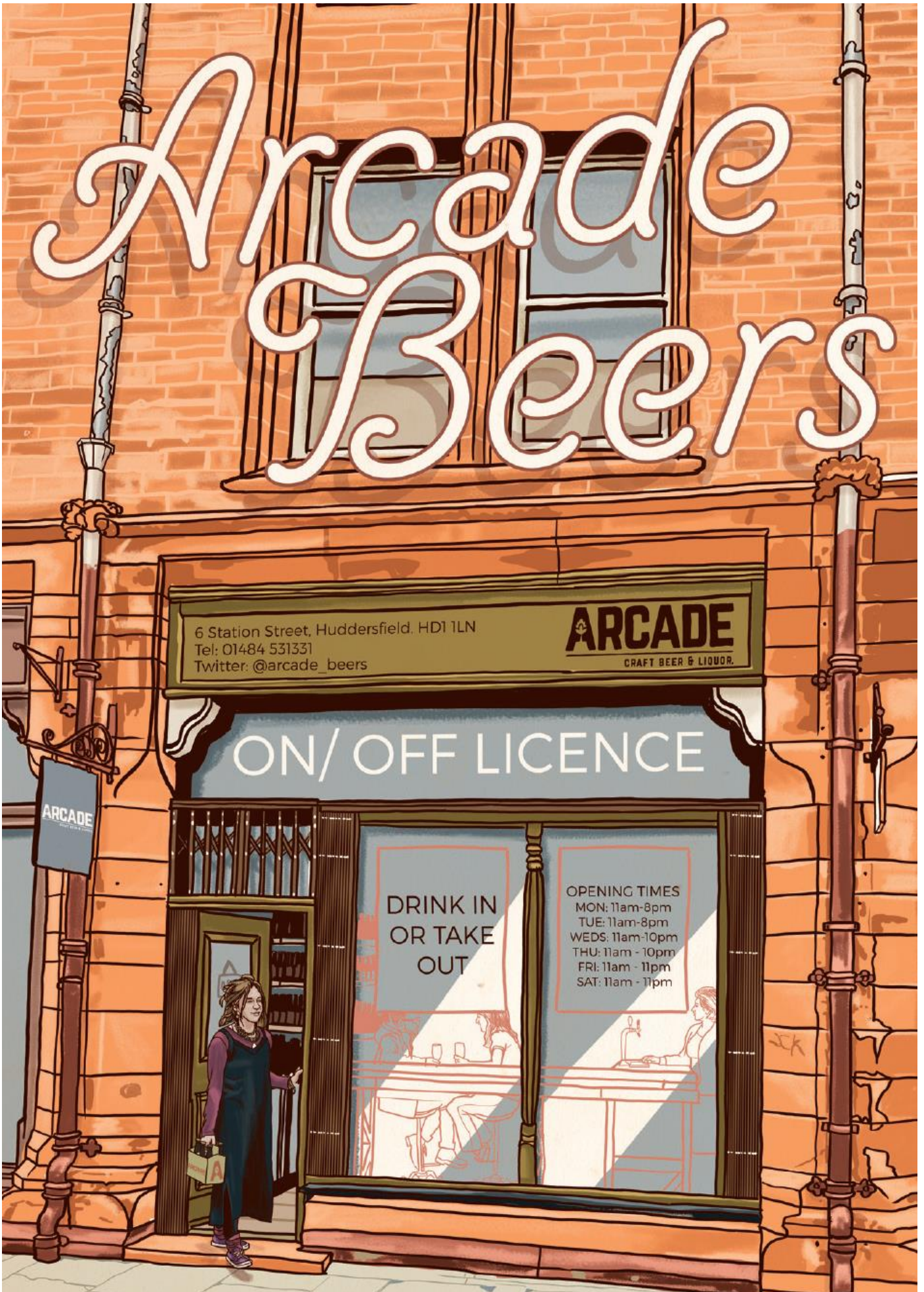
6 Station Street, Huddersfield. HD1 1LN
Tel: 01484 531331
Twitter: @arcade_beers

ARCADE
CRAFT BEER & LIQUOR.

ON/OFF LICENCE

DRINK IN
OR TAKE
OUT

OPENING TIMES
MON: 11am-8pm
TUE: 11am-8pm
WEDS: 11am-10pm
THU: 11am - 10pm
FRI: 11am - 11pm
SAT: 11am - 11pm



The **Arcade Beers**, craft beer and liquor shop in Station Street has continued to evolve since opening earlier this year. There are now 6 Taps on the back wall selling craft beers and a new bar. The range of beers includes up to 3 to 400 different beers with both a good local, national and international choice of bottled beers to drink in or take out. In addition there is an eclectic selection of Japanese, Indian and USA liquors, Scotch Whisky, Bourbon Ryes, Gins and Rums. See advert.

In the Spring edition of Ale Talk it was mentioned that the Hop Collective Ltd intended to open a new bar in the Imperial Arcade called **The Corner**. Unfortunately, due to difficulties with the London based property owners this has fallen through. Instead, an alternative site has been found in Market Walk near Dodd's Healthcare shop. All being well, **The Corner** should be open towards the end of July.

The **Magic Rock Tap** celebrates its 1st birthday at the end of June. There will be a special screening of the 'Beer Hunter – The Movie' which is a documentary on the life and work of Michael Jackson, The Beer hunter who was very influential in the world of beer and the US Craft beer movement. Tickets for the screening are £5 which includes a free drink and unlimited popcorn. Run time is 2 hours and drinks are available during the screening. Tickets are available at the Tap or through the website. The Tap will also be introducing more variety to the cask beer line and with the addition of weekly 'special editions' of existing beers.

The **Canalside Centre**, formerly the Zeneca Club, on Leeds Road is now featuring a monthly guest beer alongside the regulars Theakston's Lightfoot and Taylor's landlord. On a recent visit the guest was Everards Amber Beer.

Award Voting for Huddersfield Branch members only

To be voted upon at the Branch meeting at The Sair Inn Linthwaite, Huddersfield
on Monday 18th July 2016

Huddersfield CAMRA PUB or CLUB of the SEASON SUMMER 2016

Nominations: **To be taken at the next Branch meeting in June at the Swan, Crimble**

Please note that only currently Huddersfield Branch Members may vote,
either in person at the meeting or via the website,.

Postal votes are to be sent to: **CAMRA, 38 Springwood Avenue, Huddersfield, HD1 4BH.**
Votes must be received no later than **Monday 18th July 2016**

Armitage Bridge: The **Armitage Bridge Club** aka **The Monkey Club** has been voted Huddersfield CAMRA's **Club of the Year 2016** in recognition of the support and promotion of quality real ale. A presentation was made to the club on Monday 6th June. The following month the club will be holding its annual **Monkeyfest** on the weekend of the 2nd and 3rd July, now in its 10th year!

Burnlee: The Farmer's Arms has reduced its beer range slightly and is currently serving Greene King IPA and Abbot Ale; Charles Wells Bombardier, Bradfield's Farmers Blonde and a guest ale.

Crosland Moor: The **Sands House** was reported to be selling Bradfield's Farmers Blonde, Ossett Blonde, Saltaire Blonde and Taylors Golden Best – a bit of a blonde moment? The nearby **Rising Sun** had Moorhouses' Blond Witch and Copper Dragon Golden Pippin on handpull.

Dalton: The **Black Horse** has recently been refurbished and was reported to be selling Greene King IPA on handpull when last visited.

Denby Dale: The **Pie Hall** has Tetley Bitter and Mild on handpull with a guest ale. Often this is an Ossett beer but was Rat Trap from the Rat brewery when visited. Beer quality was good. The **White Hart** usually has 4 handpulls serving a range of regional beers. There was Wadsworth 6X, Sharpe's Atlantic and Robinson's Dizzy Blonde on the bar – all very good. The **Denby Dale Club** serves the local Small World brewery Barncliffe Bitter which is very popular with the members. The Dalesman always has well-kept Thwaites beers such as wainwrights and Thwaites draught with one or two season or guest ales. A recent one was Thwaites Copper Peel an orangey citrusy bitter

Fartown: Vinny, landlord of the **Railway** on Bradford Road, celebrates 10 years running the pub this year. The pub serves a small but well-kept range of regular and changing beers. Please visit. The **Slubbers Arms** has Taylors' beers plus guest ales with a handpump dedicated to a mild and another to cider. Busy on match days.

The Plumbers Arms

Huddersfield's Latest Real Ale House



REAL ALE – CIDERS – CRAFT BEER

REAR BEER GARDEN & FRONT ON TO PRECINCT
FOR OUTSIDE SEATING

13 ENSUITE BEDROOM / LETTING ROOMS
WiFi, TV, FULLY REFURBISHED
BREAKFAST INCLUDED – OPENING SOON

For enquiries, please contact: Mark Robertson markrobertson7@sky.com

THE PLUMBERS ARMS
6 MACAULEY STREET
HUDDERSFIELD

HUDDERSFIELD'S NEW WINE & GIN
BAR
4 MACAULEY STREET
HUDDERSFIELD
OPENING SUMMER 2016

Fenay Bridge: The Lemon & Prawn bar, formerly the **Star**, is now being converted into housing.

Hade Edge: The **Algy Arms** is selling Nook Blonde and Algy Ale (house beer).

Harden Moss: The **Huntsman** was selling Lees Bitter, MPA and Bitter while the **Ford Inn** was selling Milk Street Brewery Amber, Partners Cascade and Black Sheep bitter on a recent visit.

Hepworth: The **Butchers Arms** was reported to be selling Timothy Taylors Landlord, Bradfield Farmers Blonde, Black Sheep Bitter and Small World Barncliffe Bitter on a recent visit.

Holmbridge: The **Bridge Inn** there was Bridge Blonde, American Pale, Vanilla Stout and guest ales. Recent guests have been Marston's Pedigree and Jennings Red Rascal. The beer quality is always very good as is the food. Tuesday is Quiz night and Wednesday is Pie Night with Steak Night on Thursday. **The Stumble Inn** is open every day from 12noon to 11pm. Recent beers have included Tetley Bitter, Copper Dragon Golden Pippin, Small World Beers Thunderbridge Stout and Clark's Blonde.

Holmfirth: Gonzo's bar has been actively promoting Here Be Monsters, Thornbridge and Small World Beers over the last month. At the recent Folk Festival, the beer range was extended using SWB's mobile bar. This proved more than useful in keeping up with demand. The **Nook** will be hosting its **Summer Beer Festival** at the end of August. **Brambles** is selling Bridge Blonde as a house beer in addition to the Mild and Bitter. Guest ales include Empire Jonah, Jennings Red Rascal, RCH Slug Porter and Merrie City Atlantic Hop. **Y's Bar & Snap** has now changed its opening times to 4pm onwards weekdays and from 12noon Saturday and Sunday. It is selling Timothy Taylors Landlord, Black Sheep Bitter, Bradfield Farmers Blonde and Copper Dragon Golden Pippin. The **Old Bridge** was reported as selling Tetley Bitter, Copper Dragon Golden Pippin, Grey Hawk Dark Desert Highway, Black Sheep Best Bitter and Whitstable Bay Pale Ale.

The **Elephant & Castle** has been awarded Cask Marque and has Tetley Bitter and Sharps Doombar as regular with two guest beers which included one from Wells Brewery and Hook Norton. The **Holme Valley Civic Society Local History** group had a book launch at the **Bridge Hotel** on the 19th May. The book details the history of 19 public houses in Holmfirth past and present. It is available from the Holmfirth Tourist Information Office at the Library, price £7.50.

The **Postcard** is reported to be selling Tetley Bitter, Black Sheep Holy Grail, Rudgate Ostara Stout and Robinson's Golden Zest alongside Pony Express – the house beer. The **Toad & Tatie** is reported to have closed recently with the removal of the pub signage. It appears to have been sold and is rumoured to become a fish restaurant.

Kirkburton: The **Junction Inn** has two regular beers plus one changing guest ale, often from local micros. Recent beers have included Bob's Brewing Co. White Lion, Nethergate Stour Valley Gold and Phoenix May Fly. The house beer, Junk Ale, is supplied by Goose Eye, and the quality was very good on a recent Branch visit. There is Indian Tapas style food on a Wednesday night.

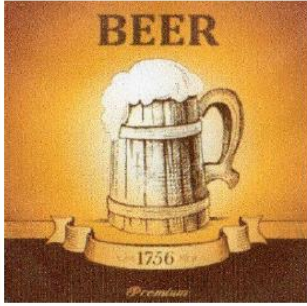
Kirkheaton: The **Yeaton Cask** has been voted **Spring Pub of the Season** by the branch and a presentation will be made on Monday 13th June. This is an excellent village pub with a good range of decent real ale from regional breweries. Do visit.

Lepton: The **Sun Inn** has been voted **Huddersfield CAMRA's Winter Pub of the Season**. Well done Donna and Carl. This pub has Tetley Bitter plus a good range of both local and regional guest beers, all kept and served well. See feature article. Also in the area is the **Rowley Hill Club**. This has Bradfield Farmers Blonde plus a guest beer on handpull. There is live entertainment on Saturday evenings and Happy hour is 4pm – 7pm Friday and Saturday only. Do call in.

Lindley: The **Nightingale** is currently undergoing a £80,000 refurbishment with the installation of new toilets and bar area. It is due to re-open as the **Old Wire Works**, a name derived from the wire works factory that previous surrounded it. An Asset of Community Value (ACV) has also been applied for the pub by the licensee.

Longwood: **The Dusty Miller**, brewery Tap for the Milltown Brewery, recently played host to a Branch meeting. The pub has a central bar supporting 7 handpulls. On the night there was Taylors Landlord and Boltmaker, Purple Moose Blonde Moment, Bootleg Brewery Urban Fox, Milltown Platinum Blonde, American Pale Ale and Black Jack. All the beers were served on top form.

Marden: The **Marsden Socialist Club** has Black Sheep Bitter on handpull. The **Marsden Liberal Club** has Bradfield Farmers Blonde and the **Marsden Royal British Legion** has Bradfields Farmers Blonde and Timothy Taylors Le Champion. **Peel One** has Milltown Platinum Blonde.



Outlane Golf Club BEER FEST



Fri 29th - Sun 31st July
11am - 11pm each day

Free Admission

20+ BEERS, CIDERS & STOUTS for you to compare.
Food will be available to buy each day with free entertainment.

Friday: **The Elder Berries** (Soft rock and country music band)

Pie & Peas

Saturday: **Abba, Motown & Everly Brothers Tribute**

BBQ

Sunday: **Slaithwaite Brass Band**

PIG ROAST

Stair lift Access Available

Check our Web Site for more Info: www.outlanegolfclub.ltd.uk

Outlane Golf Club, Slack Lane Off Newhey Road,
HUDDERSFIELD. HD3 3FQ

Telephone: 01422 374762

Netherton: The **Netherton & South Crosland Conservative Club** has 4 handpulls all serving very well-kept beer. On a recent visit there was Yorkshire heart Sunny Heart, Bradfield Farmers Blonde, Milltown Platinum Blonde and Tetley Bitter. The **Beaumont Arms** is also worth a visit.

Netherthong: **The Clothiers** has Thwaites Wainwright and Thwaites Original on handpull.

Newsome: The **Hall Bower Athletic Club** is holding their annual **beer festival** on the weekend of the 23rd and 24th July featuring a good range of beers, BBQ and live music. See advert for details.

Outlane: The **Outlane Golf Club** on Slack Lane will be holding its first **Beer Festival** over the weekend of the 29th to 31st July. It will feature 20 beers, ciders and stouts, live music each day and food. There is Free entry at all times. See advert for details. The **Dog & Partridge** has Taylors Landlord as a regular along with Black Sheep Bitter plus a guest ale which was Milltown Platinum Blonde on a recent visit. **Outlane Bowling Club** has a single handpull through which it serves guest ales. The beer quality is good and the club worth a visit. The **Commercial** had Bradfields Farmers Blonde, Moorhouses Witchfinder General and Elland Prussian White on a recent visit. The **Waggon & Horses** has 4 handpumps with Camerons Strong Arm and Bradfields Farmers Blonde as regular with two guest ales which were Red Squirrel Redtail Citra and Pot Belly Lager Brau when last visited. The **Swan** has 6 handpumps serving regular Thwaites Wainwright and Lancaster Bomber, Swan's Swaddle, Saltaire Blonde and Small World Brewery Spikes Gold and Thunderbridge Stout.

Scammonden: The **Jack o' Mitre** is now open again after a period of closure.



FOX & GOOSE
CO-OPERATIVE PUB

1st CO-OPERATIVE PUB IN WEST YORKSHIRE
Halifax CAMRA Winter Pub of the Season 2015

- Locally Brewed House Beer
- 6 Rotating Guest Ales & Ciders
- All Cask Ales under 5% abv are £2.50
- Mon to Fri 12noon – 4pm
- Large range of Bottled Lagers & Ciders
- Lined Glasses to ensure a Full pint
- Quiz – Monday 9pm
- Regular Music Sessions
- Sunny Beer Garden
- Open from 12 Noon daily

www.foxandgoose.org
7 Heptonstall Road, Hebden Bridge HX7 6AZ

Rowley Hill Club

At the Heart of Lepton and Fenay Bridge Community

Live Entertainment Every Saturday

Old and New members welcome

Always on Cask

Bradfield's Farmer's Blonde & Guest Ale

Theakston's Mild and Bitter

Selection of good wines at welcoming prices

Free Function Room

Available for Meetings, Parties and Functions

Opening times:

Mon to Thu 8pm – 11.30pm

Fri to Sun 4pm – 11.30pm

☺ **Happy Hour 4pm – 7pm (Fri & Sat Only)** ☺

Find us at www.rowleyhillclub.co.uk and on Facebook

9-11 Rowley Hill, Fenay Bridge, Huddersfield, HD8 0JF

Scissett: The **Scissett WMC** is reported to have handpumps serving real ale. More reports please.

Shepley: The **Annual Shepley Spring Festival**, Huddersfield's music event, took place in May and featured a beer tent selling Shepley Spring Ale brewed by the Rat Brewery and Shepley Higler brewed by Ossett. The **Shepley Cricket Club** is planning to hold their **Beer Festival** over the August Bank Holiday. Check the Cricket Club website for details. The **Farmers Boy** has Black Sheep Bitter, Bradfields Farmers Blond and Copper Dragon Golden Pippin and the **Black Bull** has Bradfields Farmers Blonde, Timothy Taylors Landlord and Sharps Doom Bar.

Slaiithwaite: **Nobles**, on Manchester Road has Black Sheep Bitter, Copper Dragon Golden Pippin, Thwaites Wainwright and guest ales, which on a recent visit were Empire Golden Warrior and Marston's Pedigree. **The Little Bridge** has been serving excellent Milltown Platinum Blonde.

Ashby's Deli Café has a good range of bottled beers, ciders, and Yorkshire Drizzle balsamic vinegars and oils in addition to a nice range of food and coffee. There beers from Little Valley, Milltown, Saltaire, Black Sheep, Ossett and Bean Brothers Espresso Stout courtesy of Squawk brewery. Pure North Cider is also available. Note, the Deli is only open during the day and closes at 5pm Monday to Friday, 4pm on Saturday and 3pm on Sunday. The **Shoulder of Mutton** was reported to be selling Nottingham Pale Ale, Kelham Island Easy Rider, Moorhouses' Blond Witch and Marstons New World Pale Ale on a recent visit. The **Commercial** is the brewery Tap for Empire beers and in addition to Comerciale has a good range of guest ales. **The Swan** at Crimble Bank has 10 beers on handpull. Recent beers include: Mallinson's Colcaschi, Abbeydale MEM in Black, Jennings Queen Bee, Wychwood Jester Jack, Bradfield's farmers Blonde – all on top form.

Thurstonland: The **Rose & Crown** will be holding its annual beer festival **Thurstyfest VIII** over the weekend of the 22nd to 24th July. There will be 7 live bands, food and over 50 real ales. There is a special drinks package for the day or full weekend.

Upper Denby: **The George Inn** has been voted Huddersfield CAMRA's **Rural Pub of the Year** 2016 in recognition of its support for Real Ale and its Community focus. This pub has gone from strength to strength since becoming a free house in 2012, and featuring in the CAMRA Good Beer Guide. It usually has a Small World beer and regularly supports Two Roses, Copper Dragon and Wentworth breweries. See feature article. The **Dunkirk Inn** is reported to be closed.

Upperthong: The **Royal Oak** had Bradfield Farmers Blonde, Goose Eye Balm Pot and Timothy Taylors Boltmaker on handpull with Westons Old Rosie cider.

Local Branch Members Wed

Local CAMRA Branch members Carol Johnson and Nigel Fox recently tied the knot, marrying on the 6th June at the Huddersfield Registry Office. The couple, who have known each other for four years after first meeting in Halifax, held their reception at The Cherry Tree (Wetherspoons) in Huddersfield where they celebrated with friends over a few pints of real ale.



Carol and Nigel have been active members of the Branch for the last few years, helping out at festivals and distributing copies of Ale Talk. Branch Chairman, Neil Kelly and branch members wished the couple every happiness for the future and toasted Carol and Nigel's great day at the Monkey Club meeting later that day.



Towndoor
Property Rental

ARE PROUD TO SPONSOR:

ARMITAGE BRIDGE 'MONKEY' CLUB

MONKEYFEST 10

SAT 2ND JULY, NOON - 10.30PM / SUN 3RD JULY, NOON - 9PM

LIVE MUSIC, FOOD &
OVER 60 BEERS!
IT'S MONKEY MAGIC!!

SAT 2ND JULY

LEW REY

STATE OF CONFUSION

TFB WORLD CLASS BLUES ROCK

SUN 3RD JULY

LINDLEY BRASS BAND
ENSEMBLE

JAMES SMITH

FIERY BISCUITS

ENTRY FEE £2

INCLUDING PROGRAMME AND GLASS



ARTWORK KINDLY SPONSORED BY:

ONE17

ARCHITECTS & INTERIOR DESIGNERS



KEEPITUP

IN SUPPORT OF
YORKSHIRE AIR AMBULANCE

Armitage Bridge Club, Dean Brook Road, Armitage Bridge, HD4 7PB, www.monkeyclub.co.uk

Brambles

Bar & Cafe



CAMRA AUTUMN PUB OF THE SEASON 2012

CAMRA GOOD BEER GUIDE 2014

Saturday 10am – 8.30pm;

Sunday 10am – 6pm;

Monday 10am – 3pm;

Tuesday to Friday 10am – 3pm,
5pm – 8.30pm.



**Delicious pub food with an added twist!
Also tea, coffee & tasty home bakes served daily!**

Book your parties in the Brambles Blackberry Lounge.

Fully air conditioned function room holding up to 100 guests.

Brambles Bar & Café
Towngate
Holmfirth
HD9 1HA
01484 684166



Winter Pub of the Season

The Sun Inn at Lepton has been voted Huddersfield CAMRA's Winter Pub of the Season in recognition of its beer quality and support for real ale. This is the pub's first local CAMRA award since Donna and Carl Brayshaw took over the running of the Sun Inn five years ago and is justly deserved. It is a Community pub which serves good ale and is the hub of the community

The Sun Inn, a stone built pub dating back to the 1800's, stands at the corner of Highgate Lane and Rowley Lane. It is a family owned Free House which has been renovated and tastefully refurbished to retain some of the original features but with a contemporary twist. There is an open plan feel to the place with an area set aside for a pool table and a comfortable setting of tables and chairs in front of the bar. Large screen televisions offer a selection of Sky and BT sports packages for the sports fans. In Winter, or for those chilly evenings, you can sit in front of a log-burning stove and chill out with a pint or two.

The pub is a family friendly pub which is also dog friendly. It welcomes walkers and cyclists alike. There is a beer garden out front with seating where you can enjoy a freshly cooked meal and an excellent pint to go with it. The food uses locally sourced product cooked fresh to order.

There are 3 handpumps on the bar serving one regular beer and two guest ales. Tetley Bitter is available on a permanent basis, well-kept and enjoyed by the regulars. The guest ales are generally local or regionally sourced beers from small breweries. These have included Little Valley Withens Pale Ale, Empire beers, Acorn Barnley Bitter, Churchend Goats Milk, Bradfield's Farmers Blonde and other interesting brews.

One of the many aspects of the pub is its community focus and spirit. Since the closure of Lepton's main library, the pub has provided a hub for the village's bibliophiles. Donna and Carl have given over the snug in the corner of the pub to the Sun Community Library. This has 600 books, comfortable seats and two computer terminals so regulars can enjoy a paperback with their pint. The library was officially opened by Nick Stead, Huddersfield-born horror writer.

The Sun Inn hosts a number of weekly events and supports regular live bands. Monday is pool night, Tuesday is darts, dominoes and cards night with Quiz night on Wednesday. The third Saturday of every month usually features a live band and the fourth Saturday is Disco night.



Carl and Donna Brayshaw receiving their award from Branch Chairman Neil Kelly (right)

CAMRA
Pub
of the
Season
2013

THE GEORGE INN

Upper Denby

CAMRA
GOOD
BEER
GUIDE
2015/16

Ale Talk Newsletter

Huddersfield CAMRA Rural Pub of the Year 2016

Price 0d



**A CASK MARQUE ACCREDITED
CAMRA AWARD WINNING
FAMILY OWNED FREE HOUSE**



We are extremely proud to be the
Huddersfield CAMRA
RURAL PUB
of the **YEAR 2016**

With thanks to the Huddersfield Branch
members for their continued support

JAZZ
AT THE GEORGE

The First
Thursday
of Every Month
From 8.30pm

**PIE & PEA
WALKS**

A country stroll
followed by
Homemade
Pie & Peas.
Check our website
for dates.
Please book in
advance

FOLK
SING AROUND

All welcome!
The First & Third
Monday
of Every Month
From 8.30pm

**SIMPLY A
TRADITIONAL
COUNTRY PUB
AT THE
HEART
OF VILLAGE
LIFE**

**Quality Cask Conditioned
Ales & Guest Beers**

Tetley's Cask, Timothy Taylor's Landlord
and at least one rotating Guest

QUIZ NIGHT

General Knowledge, Accumulator &
Crack the Safe. Free Supper.
Every Wednesday from 9.00pm

HOMEMADE PIE & PEAS

Beer Garden

DOGS WELCOME

NEW OPENING TIMES

Monday - Thursday 5.00pm - 10.30pm

Friday & Saturday 12.00pm - 11.30pm

Sunday 11.30am - 10.00pm

Bank Holiday Mondays 12.00pm - 10.30pm

The George Inn, 114 Denby Lane, Upper Denby

Huddersfield, West Yorkshire HD8 8UE

www.thegeorgeinn-upperdenby.co.uk

Tel: 01484 861347

Huddersfield Rural Pub of the Year

The Huddersfield CAMRA Rural Pub of the Year 2016 has been named as The George Inn at Upper Denby. It is a family run, traditional village pub which is at the heart of the community and one of the few remaining places left in the area where people can meet and enjoy a drink together.

The George Inn is well-known for its real ale. It is a Free House serving two regular beers, Tetley Bitter and Timothy Taylors Landlord, and guest ales sourced from local and regional breweries such as Ossett, Abbeydale, Milltown, Empire and Small World Beers to name a few. The beers are always well cared for and kept in tip-top condition on the bar, a fact which resulted in The George being awarded Autumn Pub of the Season in 2013 and being listed in the CAMRA Good Beer Guide 2015 and 2016. The pub also has Cask Marque accreditation. This is all down to good cellarmanship and service shown by Dean Wyatt, the landlord, his family and loyal staff.

The roadside stone built pub has been extended over the years. The tap room is one of those traditional rooms with its real fire, pool table, part wooden floorboards and stone flags and bench seating around the sides. To the back of the pub there is a comfortable lounge area with an open fire where food is served on pie night and social events such as folk singing take place. Outside there is a beer garden with the unusual notice that "Dogs and Goats are welcome."

The George hosts a number of community events which are advertised in 'The George Inn' newsletter. These include the famous Pie & Pea walks, Sing-alongs in aid of local charities, and the East Peak Outdoor Walking Festival on the 23rd and 26th June involving the East Peak Innovation Partnership. On the music front, there is a regular Jazz evening on the first Thursday of each month and Folk Singing on the first and third Monday of each month. There are occasional live bands at weekend. The pub also hosts a darts team which plays during the winter months and a bowls team during summer. Wednesday night is Quiz Night.

Food is not normally served during the day but homemade pies are served in the evening up to 9.30pm. These are baked by Celia, Dean's mum, and come highly recommended.

The normal opening times are Monday to Thursday 5pm – 10.30pm; Friday and Saturday 12noon – 11.30pm; Sunday 11.30am – 11.30pm; and Bank Holidays 12noon – 10.30pm.



Dean (centre) with Tony and Celia and the staff with their Rural POTY Award

Passionate about Beers
Passionate about Food
Passionate about Whisky
(we have one of the best selections of Malt Whisky's in the area)

Voted CAMRA
Rural Pub of the Year
For the second consecutive year
2013/2014

Cask Marque accredited
Camra Pub of the Season 2009 & 2012



Hand Pulled Real Ales
Comprehensive Menu by our Award Winning Chefs
Sunday Carvery served from 12 noon till 6.00 pm
(main menu till 8.30 pm)

2 People Dine for £10.00

12 noon till 2 pm & 5-7 pm (excluding weekends and Bank holidays)

Camra Good Beer Guide 2011,2012,2013,2014.

Wills O' Nat's Blackmoorfoot Road Meltham Holmfirth HD9 5PS

Double Award for the Sportsman

This year's Huddersfield CAMRA's Pub of the Year 2016 award has gone to The Sportsman on the corner of St Johns Road in Huddersfield. This pub is an icon of the classic British Boozer, lovingly renovated to retain its original Art Deco interior and prized Hammond's brewery windows. In 2010, it deservedly won an English Heritage Pub Design Award and now features in the Yorkshire Pubs inventory. It is open every day from lunchtime serving a mouthwatering range of up to 8 handpulled cask ales, 2 handpulled ciders, craft beers on tap and bottled beers, together with a tasty range of snacks and home-cooked food.

The Sportsman is a firm favorite with the Town's real ale drinkers and features prominently on the Real Ale Rail Trail and real ale circuit. Over the years, the pub has won many CAMRA awards scooping the prestigious Pub of the Year award three years running in 2011, 2012 and 2013.

Despite having an envious record for its beers, the Sportsman also has a proven track record for its cider and perry. It has two handpulled ciders on the bar, one supporting a local cider producer such as Pure North from Holmfirth and the other a regional or countrywide small producer. In addition, there is cider in boxes or in bottles. There is usually an interesting range of ciders available and since the handpulls were installed, cider sales have flourished. John's efforts have been rewarded with the Huddersfield CAMRA Cider Pub of the Year 2016 award. This is his first Cider award and John is justifiably proud of this and winning Pub of the Year in to the bargain.

John praised his staff for their help in winning the awards. He said they all shared his passion for beer, food and the pub's ethos. John also thanked his customers who drank his beers and enjoyed the company. The event was celebrated by local brewers, particularly Tara and Elaine from Mallinson's brewery, who brewed the special Celebration Ale 4.2% abv for the awards.



John Fletcher, landlord – 3rd from right, with his staff receive their two coveted awards of Pub of the Year and Cider Pub of the Year from Branch Chairman, Neil Kelly – 4th from right

The Navigation Tavern

6 Station Road, Mirfield WF14 8NL Tel: 01924 492476

Saturday Night at the Navi

Regular Motown / Soul Nights

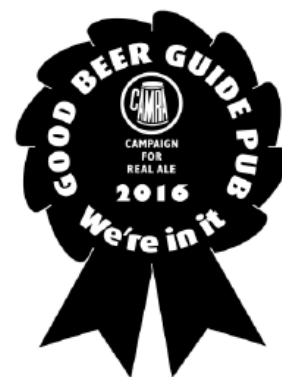
A proper night out!

Check the Navi for future dates

John Smith's Cask and 5 Theakston's Ales including Old Peculier
And now Caledonian Flying Scotsman, Deuchars I.P.A. and 80/-
Rotating Guest Ales plus Handpulled Cider and Perry

Mirfield Rail Enthusiasts Society's Meetings – phone for details

WE ARE ON THE TRANSPENNINE RAIL ALE TRAIL



Tuesday

Pool

Thursday

QUIZ

Purveyors of



Legendary Ales

THE WHITE CROSS INN

2, BRADLEY ROAD, BRADLEY, HUDDERSFIELD, HD2 1XD

Tel: 01484 425728



John and Sharon offer you a warm welcome

Fine Traditional Handpulled Cask Ales

Copper Dragon Golden Pippin

St Austell Tribute

With up to 4 Rotating Guest Ales

Good Food Available

Function / Conference Room

Huddersfield CAMRA Winter Pub of the Season 2012/2013

Huddersfield CAMRA Pub of the Year 2005

13 years in the CAMRA Good Beer Guide 2004 - 2016

Regular Bus Service from Huddersfield

Nos: 202, 203, 220, 229 (328, 278)



Pressing Issues

Dave is away on holiday and is unable to bring you his usual article on local cider and perry issues. However, he has news of a major regional festival which you should be aware of.

Now in its sixth year, the Greater Manchester CAMRA Cider and Perry Festival will be taking place once again at the end of June in central Manchester.

Providing a unique opportunity to sample a wide range of traditional cider and perry without any possible distractions from beer, this is one of the few CAMRA festivals which focuses exclusively on cider and perry, a rare event outside of the main cider producing regions in the south.

There will be a choice of over 40 ciders and perries available at the festival, sourced from a variety of small and medium sized producers from around the country.

Once again the festival will feature the North of England Cider and Perry Championship. The venue is at Copper Face Jacks at the Palace Hotel (the entrance is on the corner of Whitworth Street and Oxford Street in the City Centre – more or less opposite Oxford Road Station). The dates are 24th and 25th June and the festival will open from 12noon until 10.30pm each day. Admission is £3 (£2 for CAMRA members).

This year's Huddersfield CAMRA Cider Pub of the Year is The Sportsman. This has two handpull serving both a local and a guest cider or perry, in addition to cider from the poly-pin or bottled ciders. It is an outlet for the locally produced Pure North ciders.






Greater Manchester
Cider & Perry
Also hosting Festival

CAMRA North U.K.
Cider & Perry Competition

Over 40
**Real Ciders
& Perries**

**FRIDAY 24TH &
SATURDAY 25TH
JUNE 2016**

OPEN NOON TILL
10:30 PM
DAILY

www.ManchesterCiderFestival.org.uk

Admission £3
Pay at door
CAMRA Members £2




**@ PALACE HOTEL
OXFORD STREET
MANCHESTER
M60 7HA**




THE JUBILEE REFRESHMENT ROOMS

OLD STATION BUILDING, SOWERBY BRIDGE RAILWAY STATION,
STATION ROAD, SOWERBY BRIDGE, HX6 3AB
Tel 01422 648 285 <http://www.jubileerefreshmentrooms.co.uk>

**THE CALDER VALLEY
RAIL ALE TRAIL**

Pie & Peas + a Pint for £5.70

*Tea, coffee, hot chocolate, soft drinks
And light refreshments served all day*

**Traditional cask-conditioned ales
From Local and Regional brewers.
Cider, wines, European beers and
Spirits available from noon daily**

Opening hours	Sunday	12noon to 9pm
	Saturday	9am to 10pm
	Mon - Fri	9.30am to 10pm

THE VULCAN

32 St Peter's street
Huddersfield
HD1 1RA

Tel: 01484 302040



Opening times: 9am – 2am

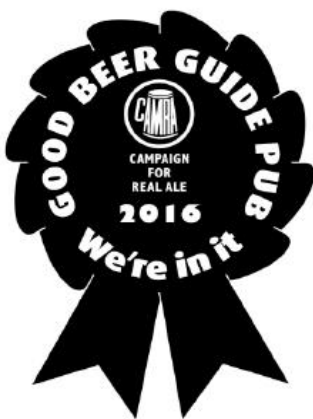
Huddersfield CAMRA Summer Pub of the Season 2012

6 Hand pumps serving the finest
Local and National Cask Ales

Up to 15 different beers per week

All at £2.50 a pint

☺ **Happy Hour** ☺, Monday to Friday 4pm till 7pm



Meals

Traditional home cooked food served daily
Monday to Saturday 10am – 2.30pm
Sunday 11am – 5pm

Roasts, home made pies, vegetarian, fish
Large menu available. Daily specials.
Breakfast trips catered for.

Weekend Disco – Karaoke – Live bands. Pool & Jukebox

Only 400 yards walk away from the Railway Station
and ½ mile from the **John Smith's Stadium**

LocAle Brewing

Beer Ink Brewing Co. Tel: 07885 676711

The Beer Ink Brewing Co. is Huddersfield's latest microbrewery. It is based in Lindley and occupies the premises previously used by the Hand Drawn Monkey brewery. Ryan Stoppard, owner and brewer, took possession of the brewery and 8 barrel plant in December and has spent the last few months adapting the brewery and building a hospitality bar. During that time, he has developed a core range of 5 beers which are available in cask, key keg and bottles.

The Brewery Tap was officially opened on Friday 29th April at the Plover Road site with an open weekend showcasing the beers. Ryan, who previously worked for HDM and the Black Jack Brewery in Manchester, plans to open the Tap on bank holiday weekends and produce a number of seasonal specials in addition to his core beers.

The core range consists of: Pin Up (4.0% abv), a pale ale brewed with Admiral, Wakatu and Summer hops, giving it the aromas and flavours of melon, apricot and lemon zest; Avant garde (4.0% abv), a non-traditional bitter brewed with Admiral, East Kent Goldings, Nugget, Summer and Ella hops. This has the same malt base as traditional English bitter but capitalises on the floral and fruity flavours of New World hops.; Noire (5.0% abv), a stout brewed with Target, Phoenix, East Kent Goldings and Wakatu hops. It has a coffee, chocolate and toffee flavour; Flagship (5.0% abv), an IPA brewed with Admiral, Nugget, Citra, Wakatu and Ella hops. It is floral, fruity and zesty with a mouth drying bitterness; Two Faced (7.0% abv), a double IPA brewed with Nugget, Citra, Cascade and Ella hops. It is hoppy and fruity.

The first of his specials was a one-off cask for the Star's Mmm festival. This was his Flagship (5.0% abv) with pineapple and grapefruit added to the cask. The beer was slightly hazy with a good hop malt balance and a predominant hint of pineapple. It was surprisingly good.

Both Avant Garde (4.0% abv) and Pin Up (4.0% abv) featured at the recent 3 Pigeons festival.

Bridge Brewery. Tel: 01484 687652

Richard recently hit his 100th brew and to celebrate this, brewed Moonshine. This will be a staggering 9.0 to 9.5% abv strong ale and be only available at the Bridge Inn. In keeping with the American 'moonshine' tradition, the beer will be sold in small 'moonshine' jars.

Bridge Blonde is now permanently on at Brambles in Holmfirth. The pub will also take more of the Bridge beers when available. The excellent NZPA Double Hop (5.9% abv) has also been on sale again.

Briggs Signature Ales. Tel: 07427 668004

The recent Star 'Mmm' fest provided the opportunity for Nick to produce two new specials exclusive to the festival. The first was Symphony #6 (3.9% abv), based on his Gospel recipe but dry hopped with Nelson Sauvín, Cascade and Columbus hops. As usual, an excellent pale hoppy bitter with that hop twist from the dry hopping.

The other was Experimental #5 (3.9% abv). This was also based on the Gospel recipe, a golden pale ale brewed with Goldings and Fuggles, but incorporating fresh rhubarb. The taste was tart but not out of character for a rhubarb based bitter.

Empire Brewing. Tel: 01484 847343, 07966 592276

April was another milestone in the brewery's history with the brewing of the 1000th brew. Russ's first ever beer was Strikes Back (4.0% abv) which he brewed on the old Quarmby site at the Field Head pub. Therefore it was only right that it should be his 1000th. In true family tradition, Craig, Russ's son and now brewer, brewed this special edition Strikes Back. Well done Craig.

Another beer proving very popular is Beard Singe'r (3.9% abv), first brewed to celebrate the defeat of the Spanish armada. This is a pale ale brewed with 3 different NZ hops to give a big

The Slubbers Arms

Fartown, Huddersfield
A real ale oasis in the heart of town



**Taylor's Landlord and Best
Plus 3 rotating guest beers
Designated Mild Pump and Real Cider**

Food Saturday and Match Day lunchtimes

Winter opening times

Mon to Thu 2pm – 11pm

Fri to Sun 12 noon – 11pm

CAMRA SUMMER PUB OF THE SEASON 2011



Bill and Kath are waiting to greet you.
Contact them on 01484 429032 for further details.

A row of six beer taps with black handles and gold bases. Each tap has a different colored label: American Pale Ale (red), Platinum Blonde (blue), Black Jack (black), Golden Amarillo (green), Gloria's Sunshine (purple), and Sterling Gold (yellow). Each label features the Milltown logo at the top and the beer name in large letters.

MILL TOWN
WHERE CHARACTER COUNTS
MilltownBrewing.co.uk
tel: 07946 589645

The SIBA local beer logo, with "SIBA" in a bold font above "local beer" in a smaller font, all within a dark rectangular box.

citrusy taste with lemon and lime flavours. Bottles are also available at the brewery shop.

Latest beers include: Porter (5.8% abv), a dark and dry, hoppy porter; Carry On Brewing (4.3% abv), a blonde bitter with a good hoppy character; and American Pale Ale (3.9% abv), brewed with Summit and Cascade hops.

Golcar Brewery. Tel: 01484 644241

Earlier this year, John brewed a new stronger version of his award winning Mild. This was brewed with extra dark malts and resulted in the excellent Chocolate Mild (5.0% abv), a strong mild with a smooth, moreish, chocolaty, malty flavour. Similarly, Ruddy Duck was re-brewed again at the slightly higher strength of 6.0% abv. Originally, this was 5.4% abv and brewed as a strong red winter ale with a fruity, malty taste. Both beers featured at the Bradford Beer festival.

The annual Golcar Lily Day celebrations saw the brewery open to the public again. However, this year John did not brew his usual special beer, Convallaria. Instead there was the Chocolate Mild, Pennine Gold (4.0% abv) and Town End Bitter (4.0% abv), most of which was consumed by the thirsty Morris troupe!

John has decided to reduce his brewing activities and will only be producing occasional brews. His bottled beers remain on sale at the usual outlets.

Here Be Monsters Brewery Tel: 07792 174863

Doug is currently looking for bigger premises in which to expand and has filed a planning application for a new site in Scholes in a former post office storage facility. If all goes to plan, the new brewery will be able to cope with demand for his cask and bottled beers.

There is a new beer out in the Cyclops range of bottled beers. Cyclops Chinook (4.4% abv) is a single hop pale ale brewed using American Chinook hops. This gives the beer spicy and pine characteristics with citrus flavours. Bottles are available in Arcade Beers in Huddersfield.

On the festival front, Cyclops Cascade (4.4% abv) and Dark Fury (4.9% abv), a dark IPA, were on sale at the 3 Pigeons beer festival in Halifax. More recently, Dark Fury and Belgian Brown (5.1% abv), a Belgian style brown ale brewed using Belgian yeast, featured at the Kirkburton KUG beer festival.

Lords Brewing Co. Tel: 07976 974162

The bottled beer sales are going well and the latest beer, Mount Helix (5.0% abv) is available from Arcade Beers in Huddersfield along with Tithe House Bitter (3.9% abv), Expedition Pale Ale (4.0% abv) and Interceptor Strong Ale (5.7% abv).

The cask versions of Expedition and Mount Helix were featured at the recent 3 Pigeons beer festival in Halifax.

Locally, the beers can be found in Bar Maroc or Small Seeds, either on handpull or in bottles.

Havelock IPA (6.5% abv) is due out about now and is described as a deep golden pale ale with a fruity, citrusy, orange aroma and taste and juicy herbal finish. It is brewed with a touch of curaçao orange and coriander to give a spicy orangey flavour.

The brewery has had a 'tap takeover' at the '10 Devonshire place' pub in Harrogate recently as part of a sales drive in North Yorkshire. The beers should also be more available in Leeds from June onwards.

LORD'S BREWING CO.
HUDDERSFIELD, WEST YORKSHIRE

SEEK AND
YOUR SMALL
FINDS

BREWERS OF FINE ALES
IN CASKS AND BOTTLES

PROUDLY BREWED IN GOLCAR
SUPPLYING NEAR AND FAR

www.lordsbrewing.com
07976974162 - 07825837713



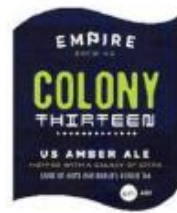
*Craft Brewers of Fine Quality Ales
Beers you can be proud of*

- Golden Warrior 3.8% abv**
- Moonrakers 3.8% abv**
- Strikes Back 4.0% abv**
- Smoking Pistol 4.3% abv**
- Jonah 4.3% abv**
- Colony Thirteen 5.1% abv**

**Plus many Seasonal
and Special Ales**

LAND OF HOPS AND BARLEY SINCE '04
Bottled Beers available DIRECT
from the Brewery

Tel: 01484 847343 Mob: 07966 592276



The Old Boilerhouse, Unit 33, Upper Mills, Slaithwaite, Huddersfield. HD7 5HA

MALLINSONS BREWING COMPANY



*Mallinsons Brewing Company Ltd specialises in
pale, hoppy beers, with a particular focus on
differing hop varieties. We have also opened a
bottle shop, located at our brewery in
Huddersfield, and open from 10am-4pm on
weekdays.*

If you cannot find our beers in your local pub,
please ask your licensee to contact us on:

01484 654301

Please check the "Our Beers" section of the website
for news about the latest beers available or email us
at info@drinkmallinsons.co.uk to go onto our
weekly mailing list



WWW.DRINKMALLINSONS.CO.UK

Magic Rock. Tel: 01484 649823

The brewery is expanding again due to demand and an additional 5 x 120 hl fermenters are due to be installed in early June taking the fermentation capacity up to 800 hl (approx. 500 barrels) This means the brewery at full capacity can produce around 70,000 pints a week!

Paul Marshall, formerly of Revolutions brewery in Castleford, will be joining Magic Rock as the new sales administrator.

In May, Magic Rock collected another prestigious international award at the World Beer Cup held in Philadelphia, USA. Cross Pollination (7.4% abv) won Silver in the Honey Beer category. This was a heather honey IPA brewed in collaboration with the guys from Arizona Wilderness.

The latest new beer is Inhaler (4.5% abv), a pale beer brewed using 3 malts – Crystal T50, Golden Promise and Imperial, and 6 different hops – Amarillo, Citra, Equinox, Galaxy, Mosaic and Simcoe. This is a super fruity, grapefruit and citrusy hoppy bitter.

OT Rocks (5.0% abv), is a pale ale brewed to celebrate the 20th anniversary of the Oliver twist bar in Stockholm. It uses Centennial hops in the mash and is dry hopped with Hallertau, Mittlefruh and Centennial hops. Another new beer is Vinification (6.0% abv), a white IPA with grape juice added during fermentation.

Holy Oak (7.7% abv) is a new collaboration brew with Gigantic Brewing Co. from Portland, Oregon. Nick Zeigler was out in Portland over Christmas and brewed a Whiskey Sour influenced beer to be aged in Bourbon barrels. The beer was launched at the Magic Rock tap at the recent 'Gigantic Meet the Brewer' tap takeover.

Mallinsons Brewing Company. Tel: 01484 654301

The brewery has now started producing, in house, beer in key kegs. This may come as a shock to some CAMRA members but it is no different from some of our other Huddersfield brewers such as Magic Rock and Summer Wine. The first key keg was the single hopped Nelson Sauvignon 93.8% abv). This was followed by Spruce Goose (6.3% abv), Beelzebub's Tears (5.7% abv), Centennial (3.9% abv) and Citra (3.8% abv).

A few new cask beers reported include: Danger Hops (5.0% abv); Deutsche Pale Ale (4.0% abv); Summit (APA) (3.9% abv); Colcaschi (4.5% abv); Mount Chivo (4.3% abv); Hallertau Blanc (4.2% abv); New World Pale (4.0% abv) hopped with Galaxy, Nelson Sauvignon and Simcoe hops; SPA #13 (3.8% abv) triple hopped with Chinook, Ella and Mount Hood hops; Serious Blendin (4.4% abv), quad hopped with Calypso, Herkules, Chinook and Centennial hops; Puttag (4.3% abv), a golden ale with passionfruit and pineapple flavours; Hop Slap (4.5% abv), Motueka Cascade (3.8% abv) and Herkules Mosaic (3.9% abv).

Carry On Cruising (3.9% abv), Maverick (6.3% abv) and Bridge of the Gods (4.2% abv) all featured at the Star Spring festival.

For the recent Star 'Mmm' fest, Mallinsons produced a number of specials based on the Emley Moor Mild (3.4% abv) and a new mild, Sandstone Mild (3.7% abv), described as a traditional mild. Raspberry Berret (3.4% abv) was the Emley moor mild with a raspberry twist and Tangerine (3.4% abv), Emley Moor mild with fresh tangerines.

In addition there were 7 specials produced using the new T90 hop pellets of existing hop varieties and some newer beers. These were: Shall We Begin (4.2% abv), Hallertau and Citra hops; Curious Poses (4.4%), Serious Blendin with Nelson Sauvignon hops; Mountains (3.9% abv), Summit and Chinook hops; PRN (3.8% abv), Nelson Sauvignon with Galaxy hops; Extra Time (3.7% abv), Brewers Gold with Citra hops; Lets Go Crazy (4.5% abv), Hop Slap with Nelson Sauvignon; and Hop Slap (4.5% abv), a pale ale with 4 hop varieties.

Milltown Brewing Company. Tel: 07946 589645, 01422 610579

Neil's latest special is Sorachi Pale (3.8% abv). This is a pale golden session beer, brewed with Maris Otter and a touch of Crystal malt. The Sorachi hops provide a refreshing lemon, lemongrass and light dill flavour and aroma. This is a great summer beer and is available at the Dusty Miller.

THE SAIR INN

HOYLE ING, LINTHWAITE, HUDDERSFIELD

(OS 100143) TEL 01484 842370

UP TO 10 HOME-BREWED AWARD-WINNING "LINFIT"
ALES AND STOUTS ON HANDPUMP.

TRADITIONAL 300 YR OLD PUB WITH STONE-FLAGGED
FLOORS OR STAINED FLOORBOARDS IN FOUR ROOMS,
EACH WITH OPEN FIRE/RANGE.

NATIONAL CAMRA PUB OF THE YEAR 1997. GBG/GOODPUB GUIDE. CASK MARQUE.

Hoyle Ing is off the A62 Manchester Road 3½ miles from Huddersfield.
Turn up Steep hill at Dyson's Mill, opposite painted tanks and Bargate bus shelter.

Bus to Linthwaite Church easy walk down Tommy Lane.

Bus to Bargate – short walk up Steep Hill.

OPENING MON-FRI 5-11, SAT 12-11, SUN 12-10.30

DUSTY MILLER


WELCOME TO
MILLTOWN
— WHERE —
CHARACTER
COUNTS



- Milltown Brewing Co's Brewery Tap
- Always serving 6 Hand Pulled Real Ales
- Rotating Guest Ales from Local and Regional Brewers
- Selection of Fine Wines, Coffee and Tea Served
- Walkers and Dogs Always Welcome

Voted CAMRA Spring Pub of the Season 2015



2 Gilead Rd, Longwood, Huddersfield, HD3 4XH

www.dustymillerlongwood.com

Rat Brewery. Tel: 01484 542400

A few new beers have been reported recently. A special, Moon Rat (3.9% abv) was produced for the 1st Claro beer festival at Ripley, Harrogate; Collaboration XI – Rat Out (5.8% abv), a rye IPA was brewed with Malcolm from Five Towns Brewery for the Red Shed East vs West beer festival in Wakefield; Ratastrophic (6.5% abv), a South Pacific IPA was on at the Rat & Ratchet; and Rataclysmic 9.0% abv), a strong double IPA, along with Ratsputin (7.4% abv), an Imperial Russian Stout in wooden cask, both starred at the 3 Pigeons Beer Festival in Halifax.

High Ka-Rat-E (7.0% abv), Mother Rat (5.5% abv), Rat Out (5.8% abv) and White Rat (4.0% abv) all featured at the recent Hull Beer Festival.

Riverhead Brewery. Tel: 01484 841270

Lisa has brewed a new beer called Red Ryding (4.3% abv). This is a full bodied rye beer with fruit and wine notes. It was available at the Riverhead Brewery Tap in Marsden.

Another new beer was 'Dia de los Murtos' (6.8% abv), a one-off special produced for the 3 Pigeons Beer Festival in Halifax. Translated as Day of the Dead, this was a wonderful tasting stout with coconut and mango flavours.

Also on the festival circuit, there was Sherbert Lemon (4.0% abv), a light refreshing wheat beer flavoured with lemongrass and lime leaves at Bradford beer festival, while Leggers Light (3.6% abv) featured at the Fox & Goose beer festival at Hebden Bridge.

Small World Beers. Tel: 01484 602805, 07540 319326

Hardly a secret but one of the brewery's best-selling beers is one of its current seasonal beers, Secret (4.0% abv). Launched late last year, the original recipe has been tweaked to improve its flavour – and it is superb. The pale straw coloured ale is dry hopped with Vic Secret hops, giving it spicy and pine characteristics with subtle passionfruit and pineapple flavours to the finish.

Summer Bank (3.7% abv) has been brewed again for summer. This is a light session ale brewed with Columbus and Centennial hops to give a floral and zesty flavour.

On the festival scene, Spring Bank (4.0% abv) and Thunderbridge Stout (5.2% abv) made their debut at Newcastle's 40th Beer Festival with Long Moor Pale (3.9% abv) and Spikes Gold (4.4% abv) making appearances at Reading and Clitheroe beer festivals. Closer to home, both Secret and Thunderbridge Stout featured at the recent Kirkburton KUG beer festival.

Summer wine Brewery. Tel: 01484 665466

A number of new beers have been reported recently. Valencia (4.0% abv) is a blond session bitter with a grassy hop aroma and grapefruit flavour; Sunset Strip (5.2% abv) is a hoppy pale ale brewed with Equinox hops; and The Juice Facilitator (5.0% abv) is a fruity hoppy pale ale.

Quarter Horse (6.0% abv) is a malty, biscuit tasting India Pale Ale and Sorachi Samurai (6.5% abv) is an IPA brewed with Sorachi hops.

Three Fiends Brewhouse. Tel: 07810 370430

The latest new beer is called Moko Titi (4.5% abv). This is a session IPA with a very fruity hop flavour and aroma with hints of peach. Brewed with a blend of NZ and US hops, this has bags of flavour and is a winner. Moko Titi has been available at the Sportsman, The Grove and Bar Maroc, in Meltham at the Liberal Club, Victoria Park and the Berry Brow Liberal Club. The brewery's bottled beers are on sale at the Beer Shack, Hinchliffe's Farm Shop and Quirky Tapas in Meltham.

On the festival scene, Moko Titi (4.5% abv) and Two Face (4.0% abv) both featured at the 3 Pigeons beer festival in Halifax and the Kirkburton KUG beer festival. Dark Side (5.3% abv), a black IPA brewed with a mixture of American hops and chocolate malt, was also on at Kirkburton.

Two new beers to look out for are Voodoo and Misfit.



**ALE
LAGER
CIDER
FOOD
MUSIC**

23rd and 24th July

HALL BOWER ATHLETIC CLUB - HALL BOWER - NEWSOME - HD4 6RR

**ALE £2.50
Pint!**

THE KING'S HEAD

(Formerly known as the Station Tavern)

Specialising in quality Real Ales from
Independent microbreweries.

Serving Timothy Taylor Landlord
Plus a range of Guest Ales



**Huddersfield CAMRA
Pub of the Year 2014**



Live Music every Sunday afternoon

We are situated at the North wing of Huddersfield Railway Station.

Families are welcome and we are dog friendly.

Open Mon-Sat 11.30am – 11pm. Sun 12 noon – 10.30am


www.the-kings-head-huddersfield.co.uk

St George's Square, Huddersfield, HD1 1JF Tel: 01484 511058

Local and Regional Beer Festivals

2 nd – 4 th Jun		10 th Skipton BF, Ermysted's Grammar School, Gargrave Rd, Skipton BD23 1PL Thu 3pm – 10pm; Fri & Sat 11am – 10pm
3 rd – 4 th Jun		Beercart Festival (Wakefield Morris), Town Hall, Market Place, Ossett WF5 8BE Fri 7pm – 11pm; Sat 12noon – 11pm.
24 th – 25 th Jun		Greater Manchester Cider & Perry festival, Copper Face Jacks, Palace Hotel, Oxford St, Manchester. M60 7HA. Fri & Sat 12noon – 10.30pm
2 nd – 3 rd Jul		Monkeyfest 10 BF, Monkey Club, Dean Brook Rd., Armitage Bridge. HD4 7PB Sat 12noon – 10.30pm, Sun 12noon – 9pm
6 th -10 th Jul		Summer BF, Star Inn, 7 Albert Rd, Lockwood, Huddersfield, HD1 3PJ Wed & Thu 5pm – 12midnight; Fri & Sat 12noon – 12midnight; Sun 12noon
22 nd – 24 th Jul		Thurstyfest VIII. Rose & Crown, The Village, Thurstonland, Hudds, HD4 6XU Normal opening times.
23 rd – 24 th Jul		Hall Bower BF, Hall Bower Athletic Club, Hall Bower, Newsome HD4 6RR Sat & Sun 12noon – 11pm.
28 th – 30 th Jul		Left Bank BF, People's History Museum, Left Bank, Spinningfields, Manchester M3 3ER. Thu 4pm – 10.30pm; Fri 12noon – 10.30pm; Sat 12noon – 9.30pm
29 th – 31 st Jul		Summer BF, Outlane Golf Club, Slack Lane, off New Hey Rd, Outlane, HD3 3FQ Fri – Sun 11am – 11pm
9 th – 13 th Aug		The Great British Beer Festival, Olympia, London www.gbbf.org.uk
26 th – 28 th Aug		Summer BF, The Nook, 7 Victoria Sq. Holmfirth HD9 2DN Normal opening times

Note: Tickets may be required in advance for some festivals. An entrance charge may be made, although card-carrying CAMRA members may receive a discount at CAMRA beer festivals. Contact ALE TALK at aletalk@huddscamra.org.uk for a free listing. A listing of a non-CAMRA event does not necessarily indicate CAMRA endorsement. CAMRA festivals are indicated by the CAMRA symbol.



Join CAMRA Today
Complete the Direct Debit form and you will receive 15 months membership for the price of 12 and a fantastic discount on your membership subscription. Alternatively you can send a cheque payable to CAMRA Ltd with your completed form, visit www.camra.org.uk/joinus or call 01727 867201. All forms should be addressed to the: Membership Department, CAMRA, 230 Hatfield Road, St Albans, AL1 4LW.

Your Details

Title _____ Surname _____ Direct Debit Non DD
Forename(s) _____ Single Membership £24 £26
Date of Birth (dd/mm/yyyy) _____ (UK & EU)
Address _____ Joint Membership £29.50 £31.50
Postcode _____ (Partner at the same address)

Email address _____ For Young Member and other concessionary rates please visit www.camra.org.uk or call 01727 867201.

Tel No(s) _____ I wish to join the Campaign for Real Ale, and agree to abide by the Memorandum and Articles of Association


Partner's Details (if Joint Membership)

Title _____ Surname _____ I enclose a cheque for _____
Forename(s) _____ Signed _____ Date _____
Date of Birth (dd/mm/yyyy) _____ Applications will be processed within 21 days
Email address (if different from main member) _____

01/15

Campaigning for Pub Goers & Beer Drinkers **Enjoying Real Ale & Pubs**

Join CAMRA today – www.camra.org.uk/joinus

Instruction to your Bank or Building Society to pay by Direct Debit 

Place fill in the whole form using a ball point pen and send to:
Campaign for Real Ale Ltd,
230 Hatfield Road, St Albans, Herts AL1 4LW

Name and full postal address of your Bank or Building Society

To the Manager _____ Bank or Building Society
Address _____
Postcode _____

Name(s) of Account Holder _____

Bank or Building Society Account Number _____ Branch Sort Code _____

Reference _____

Service User Number **9 2 6 1 2 9**


FOR CAMPAIGN FOR REAL ALE LTD OFFICIAL USE ONLY
This is not part of the instruction to your Bank or Building Society

Membership Number _____
Name _____ Password _____

Instructions to your Bank or Building Society
Please pay Campaign for Real Ale Limited Direct Debits from the account detailed on this instruction subject to the safeguards secured by the Direct Debit Guarantee. I understand that this instruction may remain with Campaign for Real Ale Limited and, if so will be passed electronically to my bank/building society.

Signature(s) _____ Date _____

Banks and Building Societies may not accept Direct Debit Instructions for some types of account. This Guarantee should be detached and retained by the payer.

The Direct Debit Guarantee 

The Guarantee is offered by all banks and building societies that accept instructions to pay by Direct Debit.
If there are any changes to the account, date or frequency of your Direct Debit The Campaign for Real Ale Ltd will notify you 10 working days in advance of your account being debited or as otherwise agreed. If you request The Campaign for Real Ale Ltd to collect a payment, confirmation of the account and date will be given to you at the time of the request.
If an error is made in the payment of your Direct Debit by The Campaign for Real Ale Ltd or your bank or building society you are entitled to a full and immediate refund of the amount paid from your bank or building society.
If you receive a refund you are not entitled to, you must pay it back when The Campaign for Real Ale Ltd asks you to.
You can cancel a Direct Debit at any time by simply contacting your bank or building society. Written confirmation may be required. Please also notify us.

Huddersfield & District Branch Diary

Branch website: www.huddscamra.org.uk

Contact details: info@huddscamra.org.uk

Chairman: Neil Kelly, 38 Springwood Avenue, Huddersfield. HD1 4BH

Mob: 07734 463529 Email: nkellyinhudd@gmail.com

All meetings and socials start at 8pm on a Monday unless otherwise stated.

Sign up for email updates at www.huddscamra.org.uk

Mon 6th Jun	Club of the Year presentation to the Armitage Bridge Monkey Club, Dean Brook Rd Armitage Bridge HD4 7PB. Bus No. 314 at 19.37hr from Bus Station.
Mon 13th Jun	Spring Pub of the Season presentation to the Yeaton Cask, Kirkheaton. HD5 0HW Minibus at 19.30hr from St George's Square, Huddersfield. Book place first.
Mon 20th Jun	Branch Meeting at the Swan, Carr Lane, Crimble, Slaithwaite HD7 5 BQ for 20.00hr. Train at 19.15hr or Bus No. 183 at 19.30hr from Huddersfield Bus Station
Mon 4th Jul	Outlane Crawl starting at the Commercial 20.00hr; Outlane Bowling Club, Waggon & Horses and White Swan. Bus No. 536 from Bus Station. Return 21.57hr Bus 537
Mon 18th Jul	Meeting at the Sair Inn, Lane Top, Linthwaite HD7 5SG for 20.00hr. Bus No. 183 at 19.30hr from Bus Station
Mon 1st Aug	Holmfirth Crawl starting at Elephant & Castle 19.32hr; Nook, Tap House, Brambles, Old Bridge. Bus No. 310 at 19.07hr from Bus Station
Mon 15th Aug	Meeting at the Wills o' Nats, Meltham HD9 4AE for 20.00hr. Minibus at 19.30hr from St George's Square, Huddersfield. Book place first.

CAMRA Regional Meetings

Sat 4th Jun	Crown Inn, 22 Hill Street, Elsecar, Barnsley, S74 8EL. Meeting starts 12.30hr.
Sat 3rd Sep	Kirkstall Bridge Inn, 12 Bridge Road, Kirkstall, Leeds. LS5 3BW. Meeting 12.30hr.

Campaign for Real Ale Ltd. 230 Hatfield Road, St Albans, Hertfordshire, AL1 4LW

<http://www.camra.org.uk>. Tel: 01727 867201 Fax: 01727 867670

To find out more about what Huddersfield CAMRA is doing visit the website.

Branch website: <http://huddscamra.org.uk/>

Branch website members' area: <http://huddscamra.org.uk/members-area/>

Branch diary: <http://huddscamra.org.uk/diary/> - use "subscribe" to get email updates

Branch interactive pub map: <http://huddscamra.org.uk/local/local-pub-maps/>

Minutes & Agendas are available in: <http://huddscamra.org.uk/members-area/>

View branch Pub & Club data at: <http://www.pubzilla.org.uk> and <http://whatpub.com/>

Advertising in Ale Talk

Deadline for the Autumn Edition is: 16th August 2016

Ale Talk is produced by the Huddersfield & District branch of the Campaign for Real Ale (CAMRA).

The views expressed are not necessarily those of the Campaign or the editor.

Editor: Bob Tomlinson. 5 Birkdale Avenue, Lindley, Huddersfield, HD3 3WB. Contributors are asked to email all news, photos, adverts and articles for consideration to the editor at

Robert.Tomlinson@cht.nhs.uk

Advertising rates:

Full page £82

½ page £47

¼ page £31

Discounts available for advance payments. Contact the Treasurer at perceyp@hotmail.com for details.

SEE WEBSITE FOR DETAILS
www.beerhouses.co.uk

one of the family
beerhouses



WEST RIDING
Licensed Refreshment Rooms

WEST RIDING
DEWSBURY RAILWAY STATION
WELLINGTON ROAD
DEWSBURY
WF13 1HF

**FREE
ENTRY**



WESTIVAL
IN
DEWSBURY

**SEPTEMBER
2nd 3rd 4th
2016**

**FRI 2nd: 6PM TILL LATE
SAT 3rd: MIDDAY TILL LATE
SUN 4th: MIDDAY TILL FINISH**

**SAT & SUN 12-6:
MARKET STALLS AND
CHILDREN'S BOUNCY CASTLE
& FACE PAINTER**

**LIVE MUSIC
THROUGHOUT THE FESTIVAL**

**3 DAYS
of BEER
& MUSIC**

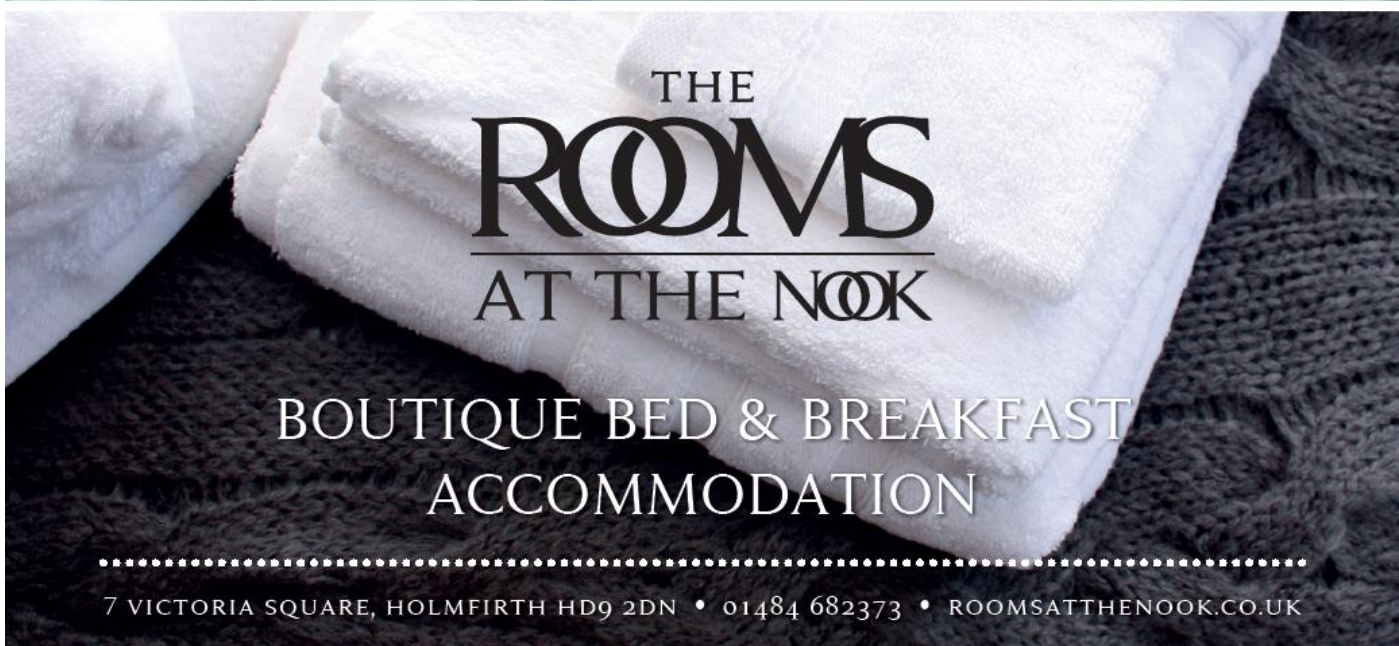
IN AID OF KIRKLEES MUSIC SCHOOL



20 • TAP HOUSE • 14

Yorkshire Tapas & Real Ales

3 Victoria Square, Holmfirth HD9 2DN • 01484 682 373 • taphouseholmfirth.co.uk



THE
ROOMS
AT THE NOOK

BOUTIQUE BED & BREAKFAST
ACCOMMODATION

7 VICTORIA SQUARE, HOLMFIRTH HD9 2DN • 01484 682373 • ROOMSATTHENOOK.CO.UK



THE
NOOK

FINE LOCAL ALES AND
A HEARTY YORKSHIRE WELCOME

7 VICTORIA SQUARE, HOLMFIRTH HD9 2DN • 01484 682373 • THENOOKHOLMFIRTH.CO.UK